

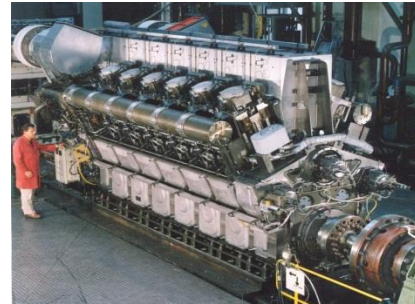
# Low Range DIGI Water Test Kit



ENGINEERING YOUR SUCCESS.

# Who are Parker Kittiwake?

- **Kittiwake are one of the world's leading asset protection experts**
- **We manufacture products that allow our customers to monitor and manage the following:**
  - Lubrication
  - Fuel
  - Gas
  - Machinery
  - Marine Water



- **Our key customers are leaders in the following application spaces:**

**Marine, Industrial, Renewable Energy, Offshore, Power, Food Manufacturing**

Parker Kittiwake are trusted and used by the majority of the major companies in our key application areas to provide products to monitor and manage their assets



# Low Range DIGI Water Test Kit

FGK17032PA



# Low Range Water Test Kit



	Water in Oil
Diesel Engine Oil	✓
Diesel Engine Oil (Cylinder Oil)	✓
Heavy Fuel Oil	✓
Distillate (Diesel/Gas Oil) Fuel Oil	✓
Hydraulic Oil	✓
Gear Oil	✓
Greases	-
Gas Engine Oil (Dual Fuel)	✓
Gas Engine Oil (Stoichiometric)	✓
Compressor Oil	✓
Turbine Oil	✓



# Water in Oil

## Effects

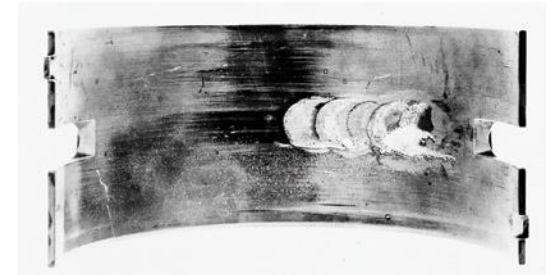
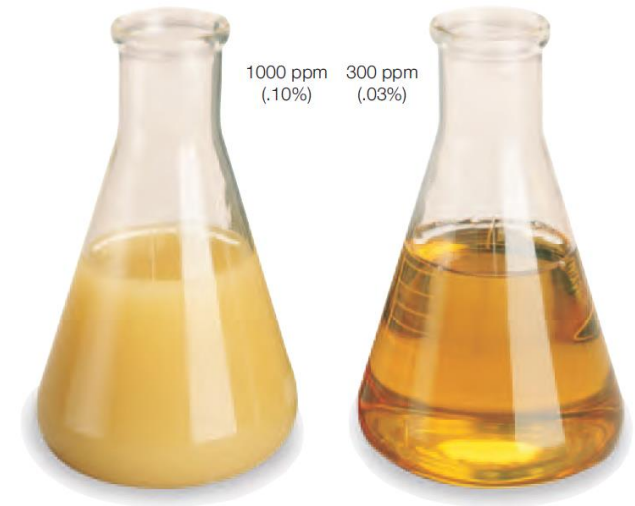
- Corrosion
- Metal to Metal Contact
- Additive Package Instability
- Microbiological Growth

## Caused by:

- Leakage – Heat Exchangers/Coolers
- Condensation
- Blow-by
- Tank Vents/Reservoir Leaks
- Incorrect/Contaminated Top-Up

## Typical Warning Limits:

- Hydraulic Fluid 300ppm (0.03%)
- Engine Lubricants 2000ppm (0.2%)
- Gear Oils 1500ppm (0.15%)



# How to



- Press any button to turn on
- Press middle button to select range
- Press “NEXT” to begin test

# How to



- Follow the instructions:

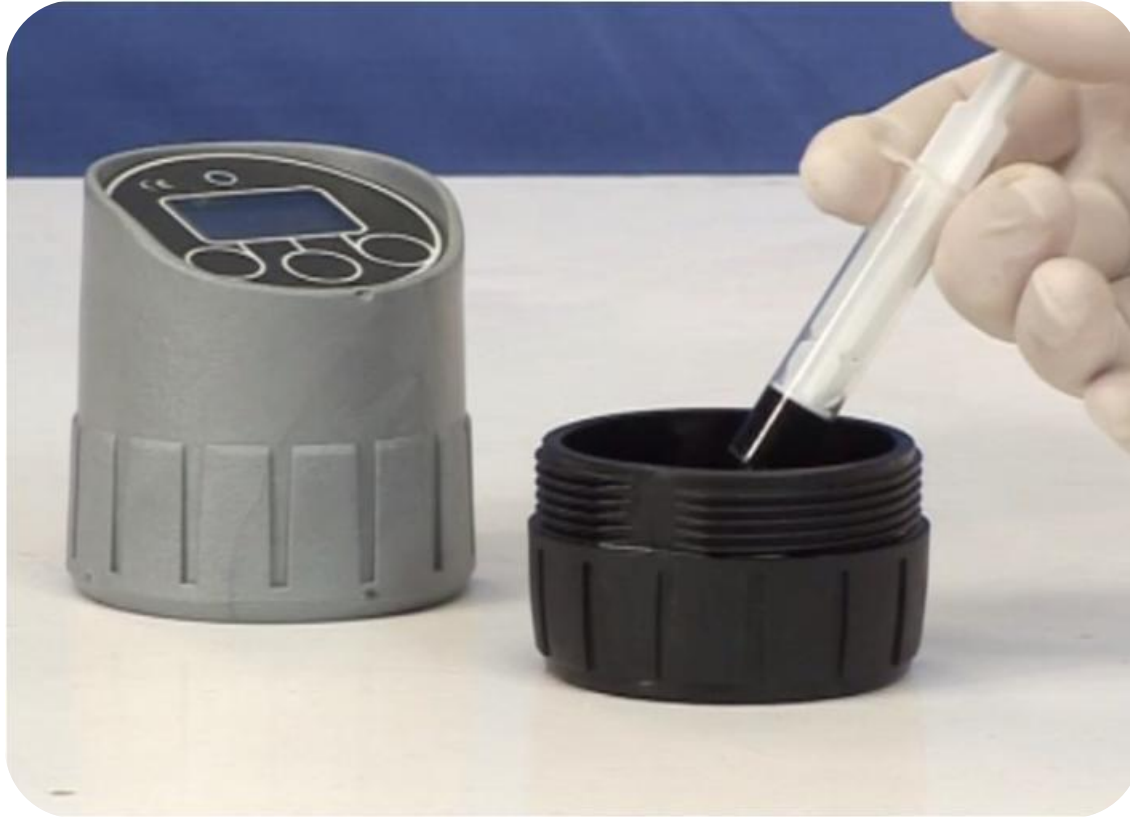
# How to



- **Add Reagent A to the top line**  
(note; for lowest range test, volume is increased – use syringe)



# How to



- Add oil sample (volume is displayed on screen)

# How to



- Open EasySHIP tube and add to cell with agitator

# How to



- Press “START”

# How to



- **Shake for 3 minutes**

# How to



- Result displayed on screen